

FLAT SLINGS



TYPE S - SIMPLEX
SINGLE THICKNESS WEBBING SLING



TYPE D - DUPLEX
DOUBLE THICKNESS WEBBING SLING



TYPE D - D - DP
DOUBLE THICKNESS WEBBING SLING
WITH STEEL FITTINGS



TYPE E - ENDLESS
SINGLE THICKNESS ENDLESS WEBBING SLING

This chart indicates the W.L.L. Working Load Limit, for webbing slings in a straight lift. Please refer to the chart overleaf for W.L.L. in various modes of lift

	WIDTH mm		WIDTH mm		WIDTH mm	COLOUR	W.L.L. TONNES
S1	60	D1	30	E1	30	VIOLET	1
S2	120	D2	60	E2	60	GREEN	2
S3	180	D3	90	E3	90	YELLOW	3
S4	240	D4	120	E4	120	GREY	4
S5	300	D5	150			RED	5
		D6	180			BROWN	6
		D8	240			BLUE	8
		D10	300			ORANGE	10

SAFETY REQUIRES PERMANENT SUPERVISION

We recommend the following procedure:

1. Lay the sling on a flat surface in well lit area.
2. Examine the sling throughout its length on both sides for surface chafe, cross or longitudinal cuts or any damage to the eyes, stitching, coupling components or fittings.
3. When not in use slings should be stored in clean, dry and well ventilated conditions at ambient temperature and on a rack away from contact with chemicals



CLEARLY DEFINED LABEL

ROUNDSLINGS

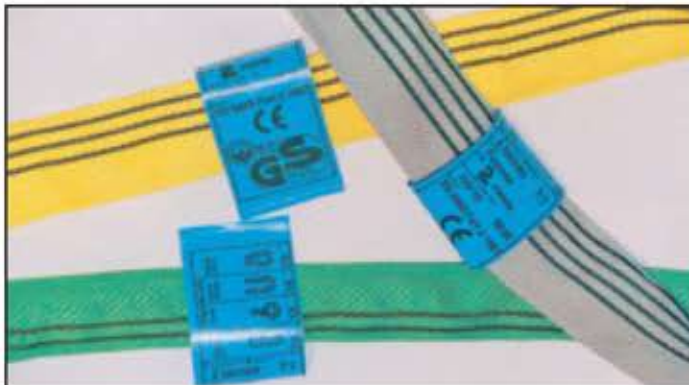
Roundslings are manufactured to BS 6668 Part 2: 1987. Roundslings conform to "The supply of machinery (Safety) regulations" 1992, (S1 1992/3073) and have a safety factor 7:1. Capacities are colour coded to indicate the working load limit.

Roundslings are manufactured from high tenacity 100% polyester fibre. The load bearing fibres are wound together to form an endless hank. The working load limit is determined by the number of turns in the hank.

The hank is then protected by a Polyester, non load bearing, seamless cover. This protects and consolidates the load bearing fibres and internal damage to these fibres is virtually impossible without first damaging the outer cover.



PROTECTIVE COVER AND LOAD BEARING FIBRE



CLEARLY DEFINED LABEL, COLOUR CODED & STRIPPED FOR THE RELEVANT W.L.L.



- High strength to weight ratio
- Light and flexible
- Ability to absorb shock loads
- Does not damage delicate and painted surfaces
- Flattens under load
- Twist or kink resistant
- Unaffected by grease and oils
- No risk of injury to operator
- Ideal for choke application
- Wears evenly along the length
- Load bearing fibres protected from the load, giving greater resistance to wear
- Low Extension

SAFETY REQUIRES PERMANENT SUPERVISION

We recommend the following procedure:

1. Lay the sling on a flat surface in a well-lit area.
2. Examine sling throughout its length on both sides for cuts or any other damage to the outer cover, stitching, coupling components or fittings.
3. When not in use slings should be stored in a clean, dry and well ventilated conditions at ambient temperature and on a rack away from contact with chemicals.
4. If the outer cover is damaged always check to ensure the load bearing fibres are intact.
5. Roundslings can be repaired when damage is restricted to the cover. Return to us for a fully certified and speedy repair service.



Lashing

RATCHET TIE DOWN

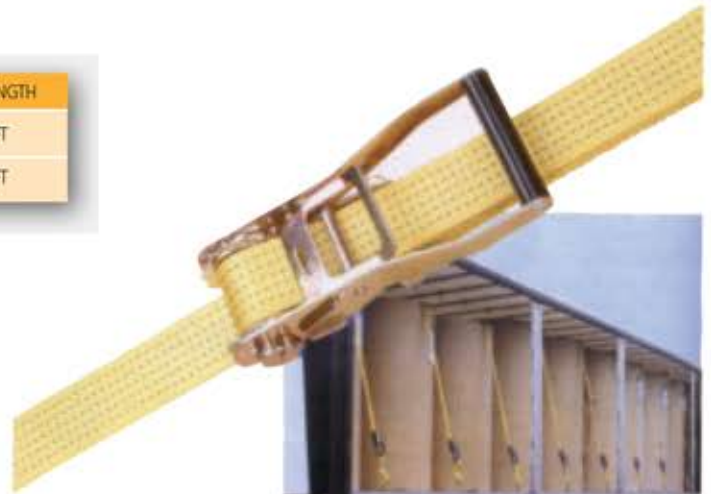
HEAVY DUTY 2"

ITEM NO	SIZE	BROKEN LOAD	WORKING LOAD	BELT LENGTH
04183	2"	5000kg	2500kg	27FT
04184	2"	5000kg	2500kg	30FT

TYPE 1:



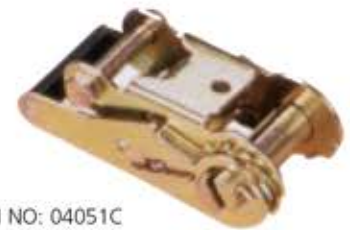
TYPE 2:



ITEM NO: 04151A
 A = 52mm
 B = 230mm
 C = 90mm
 D = 101mm
 BS = 11000LBS
 With Double Locks



ITEM NO: 04051B
 A = 52mm
 B = 197mm
 C = 90mm
 D = 101mm
 BS = 11000LBS
 With Double Locks



ITEM NO: 04051C
 A = 52mm
 B = 165mm
 C = 90mm
 D = 74mm
 BS = 11000LBS
 With Double Locks

HEAVY DUTY 1.5"

ITEM NO	SIZE	BROKEN LOAD	WORKING LOAD	BELT LENGTH
04182	1.5"	3000kg	1500kg	20FT

TYPE 1:



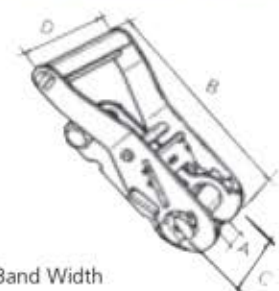
TYPE 2:



ITEM NO: 04152A
 A = 39mm
 B = 155mm
 C = 70mm
 D = 80mm
 BS = 6600LBS
 With Double Locks



ITEM NO: 04052B
 A = 39mm
 B = 157mm
 C = 70mm
 D = 56mm
 BS = 6600LBS
 With Double Locks



A = Band Width
 B = Arm Length
 C = Spindle Length
 D = Handle Width